

Doordec OÜ	Compiled: Marianne Purge	Mark: P07J08v1
Installation of steel profile glass partitions and doors with fire rating	Confirmed: Aune Paas	Page: 1
	Valid from: 21.11.2012	Pages: 2

INSTALLATION OF STEEL PROFILE GLASS PARTITIONS AND DOORS WITH FIRE RATING

(instruction)

1.1 Fire rated product and installation material verification

- 1.1.1 Fire rated steelprofile door set includes doorblade, frame (with gasket, intumescent and mounting hole covers), lock frame (depending on the order also the cylinder, handle, door closer).
- 1.1.2 Fire rated steelprofile glass partition set includes steel frame, „steel sheet – gypsum – steel sheet“ partition, glasses, gaskets and glazing blocks
- 1.1.3 Necessary materials for door installation: non-combustible material (e.g. Gypsum board) strips to fix the door; steel frame anchors (at least 5,5mm diameter); rock wool.
- 1.1.4 In case of any doubts about the completeness of the door set, contact the door supplier. Incomplete or evidently defective fire rated door must not be installed.

1.2 Verification of installation hole and dimensions

- 1.2.1 When the frame is placed inside the installation hole, it must have 10-30mm installation space on either side and above for fixing, the installation hole must have straight edges. Only then the installation space can be properly compressed.
- 1.2.2 The masonry must be strong. Lightweight construction walls must have reinforcements for installation (e.g. wood beam for gypsum wall).
- 1.2.3 If the above requirements are not met, the door must not be installed.

1.3 Installation

- 1.3.1 Place the product in the installation hole, fix the location (with gypsum strips). Drill holes in the masonry through the mounting holes in the door frame.
- 1.3.2 Steel profile products should have mountings on the sides and above with maximum of 600mm increments. Threshold is mounted from the middle. Steel profile glass partitions without doors must be mounted at least after every 1,5m. The mounting holes are prepared by the manufacturer.
- 1.3.3 If the installation hole edge is so narrow that it is not possible to drill through the mounting hole of the frame, then installation plates must be used.
- 1.3.4 Product must be mounted inside the installation hole with fasteners that provide solid and rigid installation for a particular type of wall. Steel 10mm diameter frame anchors are recommended (for concrete, brick and lightweight construction walls). Different anchors or concrete screws may be used in concrete walls (with minimum diameter of 7,5mm). In the case of gypsum wall, which installation hole edges are reinforced with wood beam, the door frame can also be mounted with screws with minimum diameter of 5,5mm. Only fasteners made from steel can be used in installation.
- 1.3.5 Make sure that the construction is not stretched during tightening the screws/anchors.

Doordec OÜ	Compiled: Marianne Purge	Mark: P07J08v1
Installation of steel profile glass partitions and doors with fire rating	Confirmed: Aune Paas	Page: 2
	Valid from: 21.11.2012	Pages: 2

1.3.6 Also welding can be used when product is mounted in steel construction. Welds can only be made in the frame area where the mounting plates are. Pay attention to corrosion protection and maintenance of fire protection of steel constructions after the welding.

1.4 Tightening installation space

1.4.1 Fill and tighten installation space with rock wool. The installation space must be refinished with non-combustible material or with steel trims.

1.4.2 Fire rated foam may not be used for installing steel profile products.

1.5 Doorblade installation

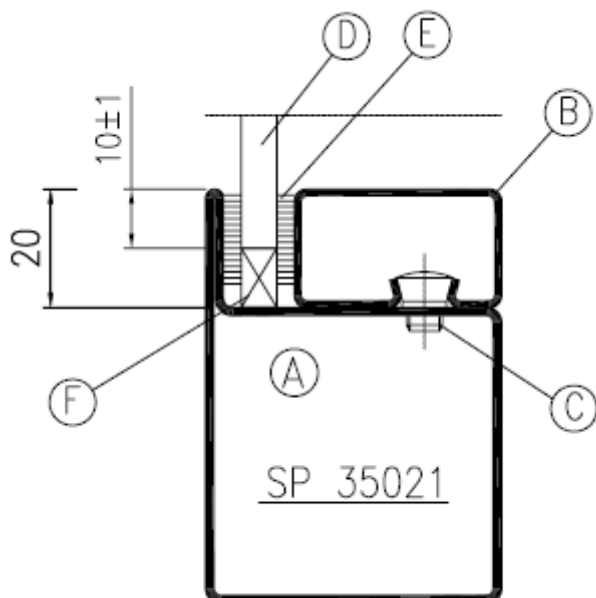
1.5.1 Verify the existence of hinge bearings. Lift the doorblade on the hinges.

1.5.2 Make sure that the door frame is leveled and the doorblade opens and closes unhindered.

1.5.3 Check operating of the lock from both sides.

1.6 Glazing

Steel profile doors and glass partitions are not glazed in the factory if it prevents mounting the frame later. Below there is a sketch of glazing.



A-steel profile frame, B-glazing bead, C-screw for mounting the glazing bead, D-glass, E-gasket, F-distance block. (SP35000, SP76500, SP79000)